

Starbursts & Baubles

These three little Christmas trees will look a treat on your table or make a fabulous gift for someone special. They use basic embroidery stitches and are easy to make.

Merry Christmas!



Each tree measure 9.5cm (3 ³/₄") tall excluding the trunk.

Materials you will need for one tree

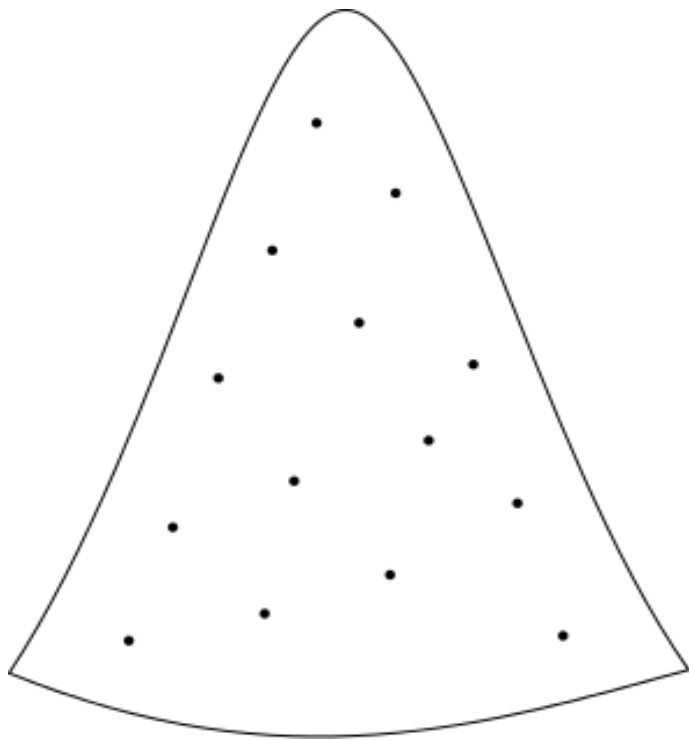
15cm (6") square of cotton or linen
15cm (6") square of backing fabric
Four shades of stranded cotton (DMC 806, 926, 3766, 3813)
White stranded cotton
Seed beads (clear silver lined)
Nos. 8 & 9 crewel needle
No. 26 tapestry needle
Fibre fill

You will also need

Sharp pencil or water-soluble marker
Sewing thread
Piece of paper or lightweight card

by Anna Scot

Starbursts & Baubles



Transferring the designs

1. Trace the pattern piece onto a piece of paper or lightweight card with a fine pen or sharp pencil.

2. Using a thick needle, pierce the paper at each of the marked dots.

Cut out the template

3. Position the template over your fabric, aligning the centre line with the straight grain of the fabric and pin in place.

4. Using a water-soluble fabric marker or sharp pencil, trace around the template and mark each dot through the holes.

4a. Baubles. To mark the circles for the baubles, draw a small circle (approx 8mm (5/16")) around each marked dot.

Embroidery

Use the large (no. 8) needle when you stitch with two strands and the small (no. 9) needle for one strand and attaching the beads. The tapestry needle is used for the whipped back stitch baubles.

Starbursts | The starbursts are embroidered in pistil stitch with white straight stitch highlights and beads in the centre.



1. Use two strands of thread for the pistil stitch and bring the thread to the front at the marked centre for each stitch.

Place three evenly spaced stitches, each 10mm - 12mm (3/8" - 1/2").

2. Work a stitch midway each of the previous.

3. Embroider a shorter pistil stitch between each of the previous.

4. Change to one strand of white thread and place a long straight stitch between each pistil stitch, bringing the thread to the front at the end of the stitch and take the needle to the back near the centre.

5. Stitch a bead securely in place at the centre.



Embroidery stitches used

Back stitch | Beading | Detached chain (lazy daisy) | Pistil stitch | Straight stitch | Whipped back

Starbursts & Baubles

Baubles | The baubles are embroidered in whipped back stitch with a bead in the centre and a fine white string and bow.

To mark the circles for the baubles, draw a small circle (approx 8mm (5/16")) around each marked dot.

1. Use two strands of thread and place four evenly spaced spokes around the circle. Stitch each from the outer edge and into the same hole at the centre.
2. Place a spoke midway between each of the previous in the same way.
3. Change to the tapestry needle (or use the eye-end of your needle) for the whipping. Bring the thread to the front between two spokes near the centre. Slide the needle under the two spokes on either side of the emerging thread.
4. Continue to wrap the spokes closely until you reach the outer edge of the marked circle.



5. Change to one strand of white thread and work back stitch around the edge of the bauble.
6. Add a straight stitch at the top for the hanging loop and two small detached chains for the bow.
7. Stitch a bead in place at the centre of the bauble.



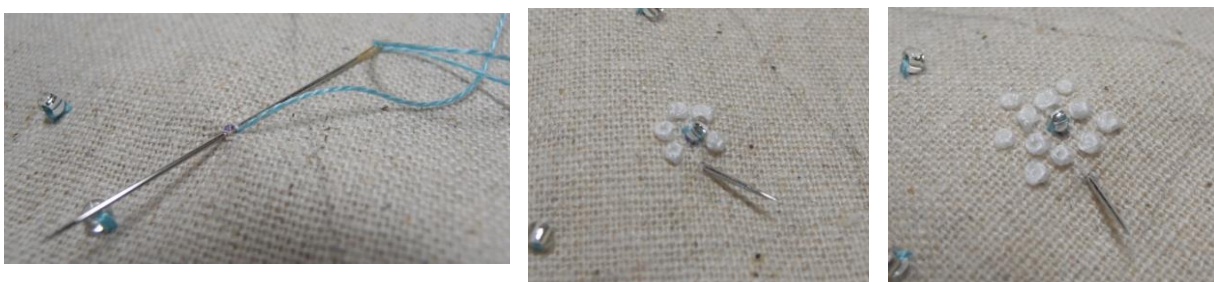
Snowflakes | The snowflakes are stitched in French knots with a bead at the centre.

1. Using one strand of blue thread in the no. 9 needle, stitch a bead in place at each of the marked spots. Work two stitches through each bead to make sure they are secure.

2. Change to two strands of white and the no. 8 crewel needle.

Stitch 6 French knots, each with 2 wraps around the bead.

3. Stitch a second round of French knots, placing each midway and a bit further out from the previous.



Starbursts & Baubles

Wording | You may like to embroider wording, a name or message on the back of your Christmas tree. Handwrite the words with a water-soluble marker. Alternatively use your computer and print your words before transferring them onto your fabric.

I used two strands of blue thread to embroider my message in stem stitch on the back of one of my trees.

You will need to keep the stitches quite small to get around the tight corners. Alternatively you can embroider wording in back stitch.

Merry
Christmas



MAKING THE ORNAMENT

1. Press the embroidery from the wrong side onto a soft, padded surface.
Cut out each piece, leaving a 1cm ($\frac{3}{8}$ ") seam allowance around all sides.
2. Cut out the back pieces from matching fabric or print cotton in the same way.
3. Place the pieces with right sides together and pin.
4. Using a short stitch length, machine stitch the pieces together around the edge, leaving a 3cm 1 $\frac{1}{4}$ " opening at the centre of the base.
5. Turn the tree to the right side through the opening.
Push out the corners and press the seams.
6. Begin to fill the tree firmly with fibre-fill until halfway down, then fill the sides.
7. Insert the stick into the tree and hold it firmly in place while you continue to fill the tree.
8. Handstitch the opening closed around the stick.

Bead edge

To finish the edge of your tree, stitch bead in place over the seam around the edge.



NOTE: The trees can easily be made as hanging ornaments. Simply omit the stick trunk, add a ribbon or twisted thread hanging loop at the top and perhaps a pretty bell at the base.